



A Touchmark® community
Est. 1980

A year of challenges *and* growth

The year of 2010 has been one of challenges for those of us living in the state of South Dakota. We received record snow and rain that resulted in much flooding in the area, which sadly damaged or destroyed several homes. Here at Waterford, we were lucky to only have minimal effect.

We were pleased to welcome a number of new residents and their families to our community. In fact, more people live at Waterford than any time in our history. It gives me great pleasure to be able to provide services that are of such value in our region.

I would like to welcome all who may be thinking of making a change to stop by and see why your friends are now calling Waterford home.



Angie Rabon

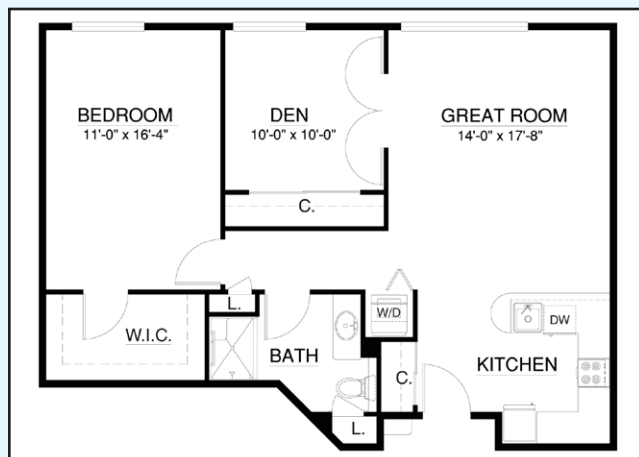
Angie Rabon
Executive Director

Enjoying a holiday tradition



Resident Delores Flynn (from left), team member Karla Pederson-Capell, and resident Bonnie Ellenbrand work on a gingerbread house together.

Ring in the new year in a new home



Apartment home 115 is calling your name! This 864-square-foot home offers one bedroom, one bathroom, and a den. Call or stop by today and discover the good life on the historic All Saints campus.

Just for laughs!

Hilarious Newspaper Headlines

1. Police Begin Campaign to Run Down Jaywalkers
2. Stolen Painting Found by Tree
3. Two Sisters Reunited after 18 Years in Checkout Counter
4. If Strike Isn't Settled Quickly, It May Last a While
5. Man Struck by Lightning Faces Battery Charge

From www.basicjokes.com

Coming Events

Contact a Life Enrichment/Wellness team member for additional details, including registration and transportation information.

Tuesdays and Thursdays at 1 pm

Brain Builder's class. A new class is forming and will meet in the second-floor Family Room.

Thursday, Jan. 13, 11:30 am

Book Review and Luncheon. Candace Cameron will preview the book *The Story of Edgar Sawtelle*. Seating is limited; RSVP to Krista by Tuesday, Jan. 11.

Friday, Jan. 14, 1 to 3 pm

Chili Cookoff. Heritage Room

Friday, Jan. 28, 2:30 pm

Welcome Tea. Come meet the newest members of the Waterford family. North Imperial Dining Room.

Imagine—and Live—the Possibilities!



Marge Coalman, EdD
Vice President of Wellness & Programs,
Touchmark

“We all have possibilities we don’t know about. We can do things we don’t even dream we can do.” — Dale Carnegie

The theme for 2011 in all Touchmark/Waterford communities is Imagine—and Live—the Possibilities! The intent of this yearlong focus is to nurture and support the unique talents, skills, hopes, wishes, and dreams of people who live and work in Touchmark communities.

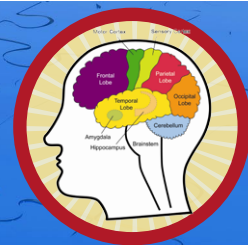
Over the years, it has been a thrilling journey to help residents and team members discover amazing possibilities. They have planned and realized rafting trips, cruises, contests and competitions, physical activity challenges, talent shows, performing arts productions, and many more adventures.

To help meet the needs of people less fortunate, residents partner with agencies and individuals. They sew, knit, and crochet garments and blankets for children and adults. They gather food, socks, cookies, and books to distribute near and far. They generously give their time and talents as well as their resources to students who need extra help, hospitals, organizations serving meals, and other charitable causes.

There are countless stories of individual residents pursuing lifelong learning as they pick up a paintbrush or digital camera to explore a new hobby. Residents have shared their creative writing, poetry, and recipes. They welcome newcomers and encourage them to participate in classes and opportunities to pursue their own learning goals. Activities as diverse as computer skills and new dance trends have been introduced to willing learners. All of these came from imagining—and living—the possibilities.

This is not a new concept for Touchmark. The focus in 2011 will be to develop even more of the possibilities. If you would like to help plan and promote the Imagine—and Live—the Possibilities! theme, contact Life Enrichment/Wellness Director Krista Musser. The talents, time, energy, enthusiasm, and support of each resident and team member will cultivate the yearlong emphasis on personal and community possibilities. ■

Brain Builders



Change one letter in each word to name a food.

1. mill: _____
2. batter: _____
3. meet: _____
4. born: _____
5. demon: _____
6. fork: _____
7. reef: _____
8. soul: _____
9. ego: _____
10. baton: _____
11. hat: _____
12. ride: _____
13. steal: _____
14. dish: _____
15. tune: _____

Answers: milk, butter, meat, corn, lemon, pork, beef, soup, egg, bacon, ham, rice, steak, fish, and tuna.

Celebrating Moments of Pride: Spotted at a curio near you

Angie Rabon's collection of Royal Copenhagen Santa Claus figurines adds some holiday cheer to the curio cabinet. Angie was first drawn to the 2005 release of Santa on a Rocking Horse when visiting family in Elk Horn, Iowa. Having Danish roots, Angie was particularly interested in collecting each annual release, and has since added eight more Santa Claus figurines to her collection. She now has all the figurines released from 2002 through 2010:

- 2002 A Visit From Santa
- 2003 Santa's List
- 2004 Santa
- 2006 Santa with Rudolph
- 2007 Santa Is Taking a Nap
- 2008 Santa Skating with Teddy
- 2009 Santa Playing with His Dog
- 2010 Santa Feeding the Birds

Accompanying Angie's Santa Claus collection in the curio cabinet are Laurie Knudson's eight Bing & Grondahl Christmas in America plates as well as a variety of other Bing & Grondahl porcelain Laurie has collected over the years. One pattern dates back 200 years! Her

holiday plates include:

- 1986 Christmas Eve at Williamsburg
- 1987 Christmas at the Whitehouse
- 1988 Christmas at Rockefeller Center
- 1989 Christmas in New England
- 1990 Christmas Eve at the Capital
- 1991 Christmas at Independence Hall
- 1992 Christmas Eve in San Francisco
- 1993 Coming Home for Christmas ■



Calling all knitters and crocheters!

South Dakota Special Olympics is looking for volunteers to knit or crochet 500 scarves for the athletes, coaches, volunteers, and supporters involved with the Winter Special Olympics.

If you are interested in helping with the effort, please contact Life Enrichment/Wellness Director Krista Musser or resident Elizabeth Balcer. ■

Sharing Santa



Resident Lorraine Anderson shared her Santa collection during the holidays. She loves to collect a wide variety of Santas.

A visitor from up north



Santa Claus takes a break from making toys to visit with residents and guests.